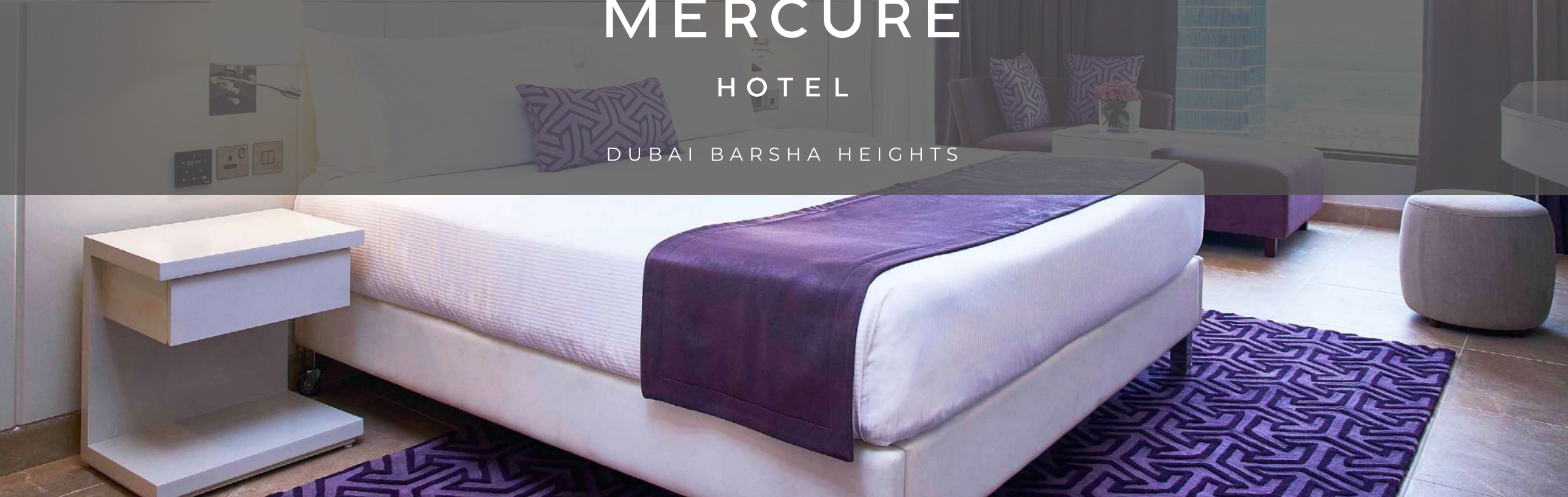




MERCURE

HOTEL

DUBAI BARSHA HEIGHTS



LOCATION

Staying within reach

Located along the world-famous Sheikh Zayed Road, Mercure Dubai Barsha Heights

Hotel Suites & Apartments provides

- » Exceptional accommodation
- » Variety of dining outlets
- » Impeccable service
- » Unique city access

Accessibility

Experience the grandeur of Dubai in style; in the all-new Mercure Dubai Barsha Heights Hotel Suites & Apartments,

- » Impressive 41-storey tower with
- » 1,015 Suites and Apartments.
- » Prime location
- » Lies in the heart of Dubai, beside the Dubai Internet City Metro Station
- » Close to the city's major shopping areas
- » 25-minutes away from Dubai International Airport and the World Trade Centre.



SCAN
TO LOCATE



HOTEL FACILITIES

Offering a range of facilities & services, the comfort of business and leisure travels are catered to, ensuring enjoyment and convenience throughout their stay.

- » Dining venues: café, sports bar, all-day dining, speciality restaurant and poolbar
- » Swimming pool, kids pool, jacuzzi, sauna, steam, fitness center, kids club, spa and squash court
- » Business centre & Wi-Fi throughout the hotel
- » 8 meeting rooms plus lounge
- » Exclusive long term reception
- » Laundry services
- » Retail shops including mini market and pharmacy
- » Car & limousine rental service, excursion desk
- » Salon for ladies & gents
- » 24 hours security
- » Covered car parking



ESSENTIAL COMFORT

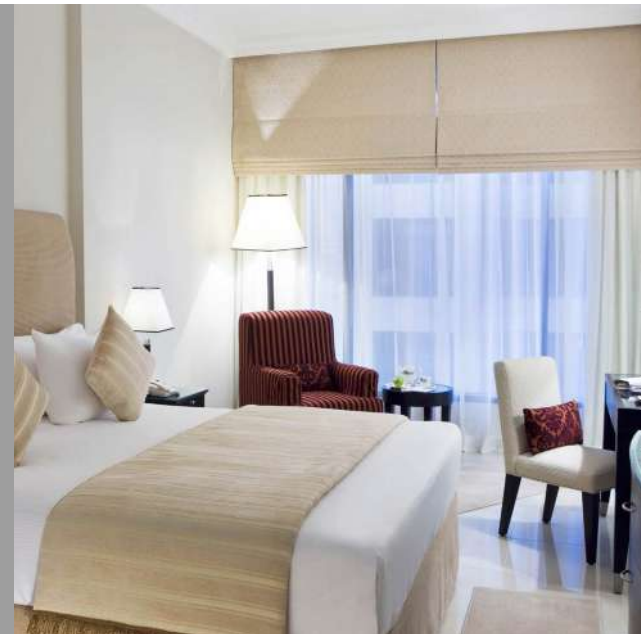
Experience stylish accommodation with an awe-inspiring city and sea views at Mercure Dubai Barsha Heights - Hotel Suites & Apartments. Whether you are in town for business or leisure travel, the spacious and elegantly appointed suites & apartments offer an inviting ambiance complimented by unparalleled modern amenities featuring the latest in-room technology. The hotel is suitable for both long and short stays and offers 1 & 2-bedroom suites and deluxe hotel apartments in different styles.



408 SUITES

255 one-bedroom suites

153 two-bedroom suites



607 APARTMENTS

382 one-bedroom apartments

225 two-bedroom apartments



HOTEL SUITES

The new suites are contemporary with all facilities leading into a spacious living area, bedrooms with a big balcony and bathrooms with walk-in shower & bathtub.

Key factors of the hotel design is the strong coherence in all areas, which can be seen in a smooth integrity of design elements, such as sketched wallpapers with several panoramas of Dubai, custom made patterns on carpets presented in guestrooms, public areas, dining venues and meeting rooms.

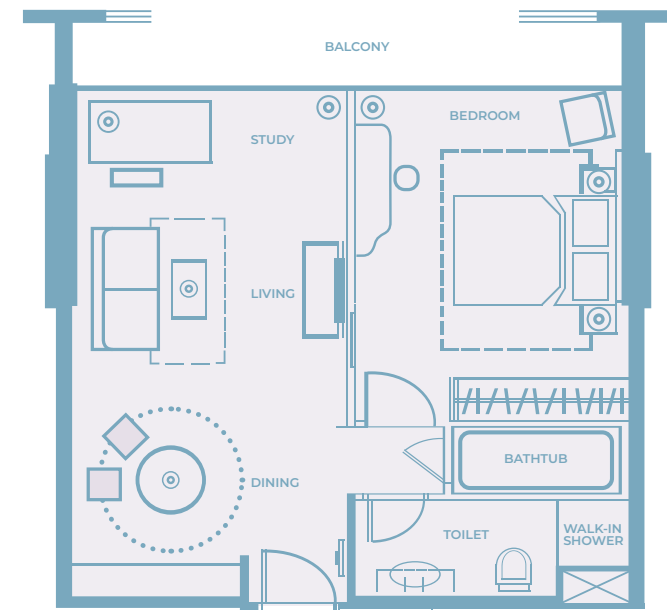
DELUXE SUITE ONE BEDROOM | 60 m²

KING BED | TWIN BED

CITY VIEW | SKYLINE VIEW

Suite Facilities

- » Private balcony
- » Comfortable sofa bed
- » Separate living lounge
- » Premium guest amenities
- » Walk in shower and bathtub
- » Coffee and tea making facilities
- » Flat screen smart TV's in the bedroom and living room
- » Complimentary Wi-Fi
- » Laundry & dry cleaning service
- » Electronic safety deposit box
- » Hair dryer
- » Shaving mirror
- » Complimentary bottled drinking water
- » Minibar facilities
- » All rooms are non-smoking rooms
- » Rooms available for guests of determination
- » Baby cot (upon request, subject to availability)
- » Extra beds (upon request, subject to availability)
- » Iron & ironing board (upon request)



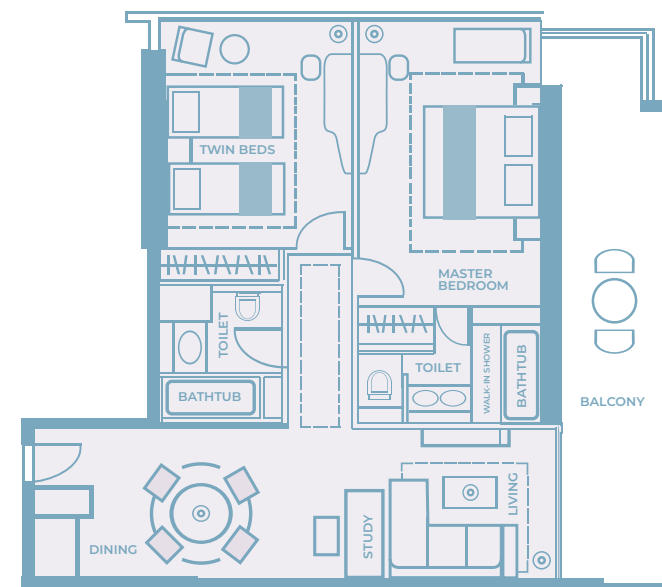
PRESTIGE SUITE TWO BEDROOM | 105 m²

KING BED | TWIN BED

CITY VIEW | SKYLINE VIEW

Suite Facilities

- » Private balcony
- » Separate living lounge
- » Premium guest amenities
- » Walk in shower and bathtub
- » Coffee and tea making facilities
- » Flat screen smart TV's in the bedroom and living room
- » Complimentary Wi-Fi
- » Laundry & dry cleaning service
- » Electronic safety deposit box
- » Hair dryer
- » Shaving mirror
- » Complimentary bottled drinking water
- » Minibar facilities
- » All rooms are non-smoking rooms
- » Rooms available for guests of determination
- » Baby cot (upon request, subject to availability)
- » Extra beds (upon request, subject to availability)
- » Iron & ironing board (upon request)



HOTEL SUITES





HOTEL APARTMENT

Ideal for extended or long stays, business or leisure. Situated in Dubai's most favoured location, on Sheikh Zayed Road, our hotel apartments offer you a range of personalized experiences.

Whether you need a crash pad to rest your head for a night, a great value accommodation to keep you productive for a week-long business trip, or are looking for a spacious one or two-bedroom hotel apartment from which to explore Dubai for an extended stay, Mercure Dubai Barsha Heights Hotel Apartments provides you with a relaxing stay.

- » Located right next to the metro station
- » Easy access to the public transport
- » Located beside Internet city, Media city and Knowledge park

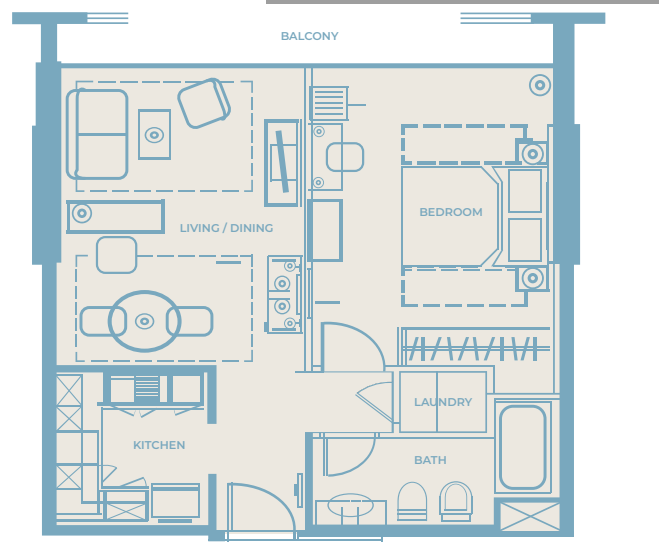
ONE BEDROOM APARTMENT 60 m²

KING BED | TWIN BED

CITY VIEW | SKYLINE VIEW

Apartment Facilities

- » Spacious private balcony with amazing city and skyline views
- » Fully Equipped Kitchen
- » Washing machine with dryer
- » Premium guest amenities
- » Walk in shower and bathtub
- » Coffee and tea making facilities
- » Flat screen smart TV's in the bedroom and living room
- » Laundry & dry cleaning service
- » Electronic safety deposit box
- » Hair dryer
- » Shaving mirror
- » Minibar facilities



- » All rooms are non-smoking rooms
- » Rooms available for guests of determination
- » Baby cot (upon request, subject to availability)
- » Extra beds (upon request, subject to availability)
- » Iron & ironing board (upon request)

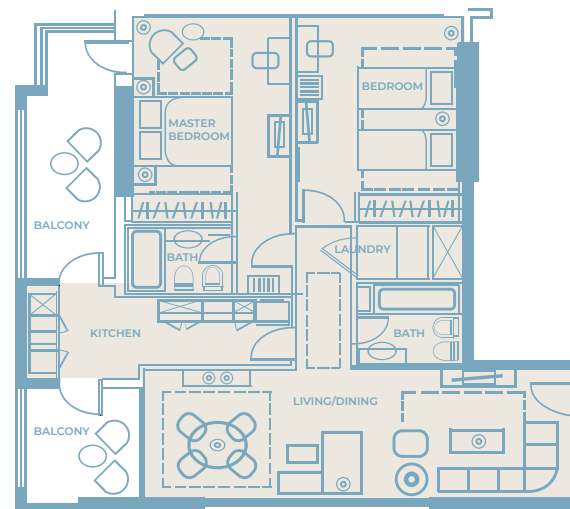
TWO BEDROOM APARTMENT 105 m²

KING BED | TWIN BED

CITY VIEW | SKYLINE VIEW

Apartment Facilities

- » Spacious private balcony with amazing city and skyline views
- » 24 hour in room dining
- » Fully Equipped Kitchen
- » Washing machine with dryer
- » Dishwasher
- » Premium guest amenities
- » Walk in shower and bathtub
- » Walk in shower and bathtub
- » Coffee and tea making facilities
- » Flat screen smart TV's in the bedroom and living room
- » Laundry & dry cleaning service
- » Electronic safety deposit box
- » Hair dryer



- » Shaving mirror
- » Minibar facilities
- » All rooms are non-smoking rooms
- » Rooms available for guests of determination
- » Baby cot (upon request, subject to availability)
- » Extra beds (upon request, subject to availability)
- » Iron & ironing board (upon request)

APARTMENT STYLE



CALIFORNIAN

CLASSIC

MEDITERRANEAN

MODERN

DINING

You'll find a variety of food and beverage options on-site from the all-day dining, to the lobby café, sports bar, pool bar and a specialty restaurant. There is an inviting outdoor swimming pool deck on level 8 with a jacuzzi and kids pool, terrace and a pool bar for your enjoyment. If you prefer to dine in the privacy of your room, you may explore our extensive room service menu or the quick meal menu available at all times. The 24-hour In-Room Dining services will satisfy your cravings.



DINING



CAFÉ SOCIAL



Located on the
ground floor



Sit back and relax in our lobby lounge. Let our lobby lounge entice you with cosy seating, delicious food and friendly service. Come in the morning for a choice of hearty and healthy breakfast menus and eggs cooked to your liking. Alternatively, stop by in the afternoon for a decadent French goûter, or snack. Light meals can be had throughout the day along with mocktails and coffee creations.



All-day global dining in Barsha Heights. Join us at our signature restaurant for a fun and fulfilling dining experience in Dubai. Sample dishes from around the world from three live cooking stations. Choose your favourite cut of meat or poultry and watch as our chefs grill it to perfection before your eyes. There's also pizza, pasta, sandwiches, salads, burgers and more. Whatever you want, whenever you want it—day and night.



Located on the ground floor

DINING



Located on the
ground floor



A sports bar with an outdoor terrace an upbeat venue is inspired by London bars and is a trendy haunt for the young and the young at heart. Here patrons will find their favorite sports bar style menu, paired with an extensive range of draught beers, cocktails, mocktails and other refreshments in a welcoming and lively atmosphere. The Exit Sports Bar, is the perfect place to catch up with friends and watch live sport from around the world on the big screen.



Located on the 8th floor, it is a perfect cool, calm and classy place to meet up with friends over sophisticated drinks.



Located on the 8th floor

DINING



Located on the
8th floor



Relax and unwind overlooking skyline views. For good times during your stay in Barsha Heights, head to level 8 where you can enjoy light snacks and beverages by the pool with friends and family.



MERCURE

HOTEL

DUBAI BARSHA HEIGHTS

MEETINGS & EVENTS



Corporate Functions & Social Gatherings

Discover flexible spaces that adapt perfectly to your meeting or conference goals, along with technology that accommodates the most demanding presentation and communication requirements. Experienced support is on site; Mercure Dubai Barsha Heights - Hotel Suites & Apartments accommodates major banquets, private receptions, indoor meetings or events.

- » 8 meeting rooms with more than 400 total square meters of exceptional meeting and conference facilities
- » High-speed internet access
- » Business center
- » Reception
- » LCD projector & wireless microphones
- » Unique lighting system
- » Skyline view
- » Pre-function areas
- » “State of the Art” audio/visual equipment



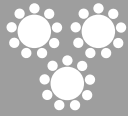
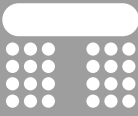



Corporate Functions & Social Gatherings

Mercure Dubai Barsha Heights offers a wide range of multi-functional meeting and event rooms, ranging in seating capacity from 20 up to 100 guests. Our professional team will always be ready to customize your meetings or events.

The 8 venues can accommodate different types of events, meetings or gatherings. And are equipped with state-of-the-art-audio/visual equipment, unique lighting systems as well as an assistant from the 24-hour business center will ensure all events are properly taken care of at all times.

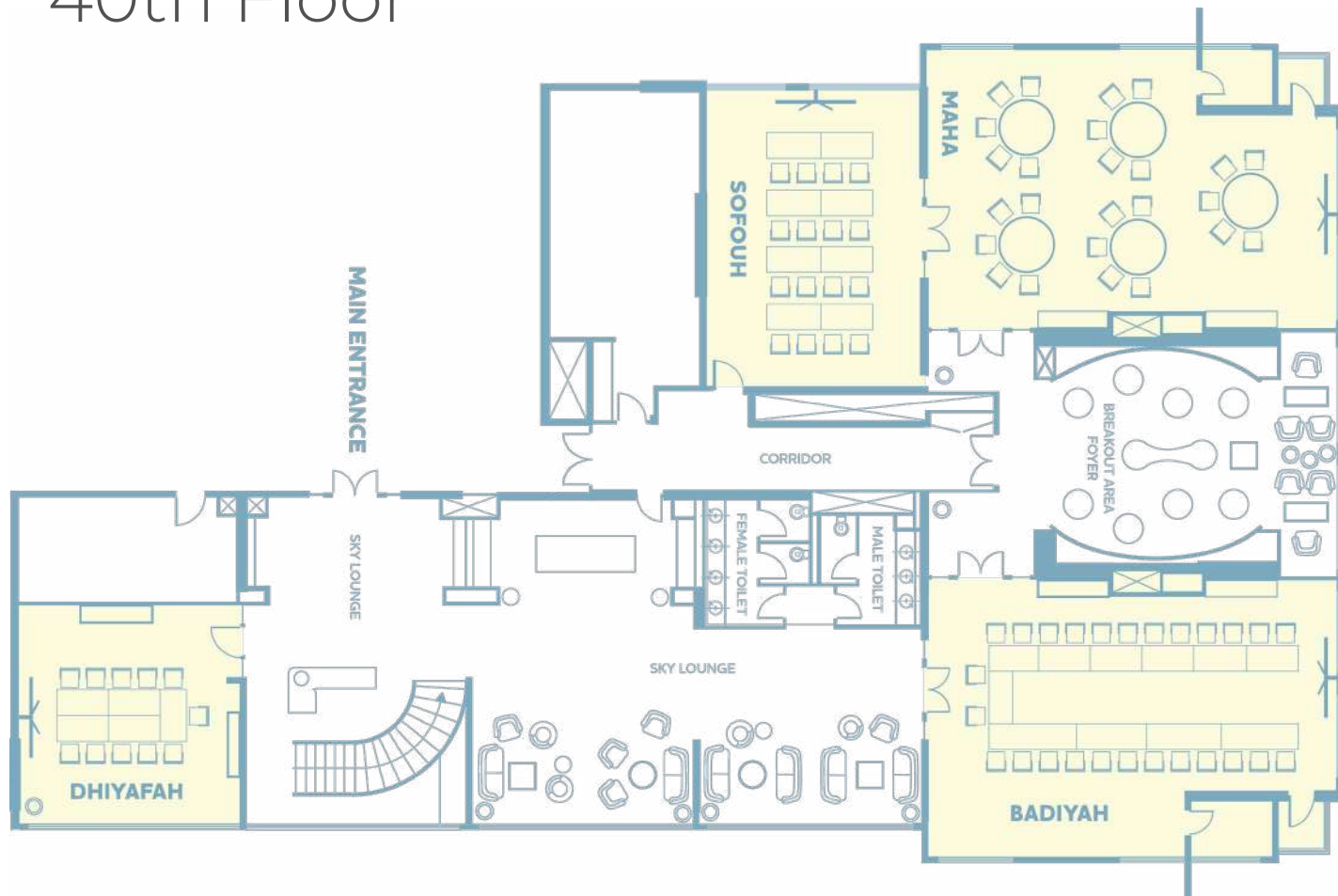


Capacity Chart

| | AREA (m ²) |  ROUND OF 10 |  CABARET OF 8 |  COCKTAIL |  THEATRE |  CLASSROOM |  U-SHAPE |  BOARDROOM |
|-----------|---------------------------|---|---|--|---|---|---|---|
| BADIYAH | 95 | 42 | 42 | 60 | 100 | 28 | 26 | 26 |
| MAHA | 95 | 42 | 42 | 60 | 100 | 28 | 26 | 26 |
| SOFOUH | 59.6 | 16 | 16 | 35 | 40 | 16 | 16 | 16 |
| DHIYAFAH | 45 | 0 | 0 | 0 | 0 | 0 | 0 | 12 |
| AL KHAIL | 65.5 | 22 | 22 | 35 | 40 | 16 | 18 | 18 |
| AL KHOOR | 29 | 0 | 0 | 0 | 0 | 0 | 0 | 12 |
| AL ITIHAD | 28.6 | 0 | 0 | 0 | 0 | 0 | 0 | 12 |
| AL WAHDA | 28.6 | 0 | 0 | 0 | 0 | 0 | 0 | 12 |

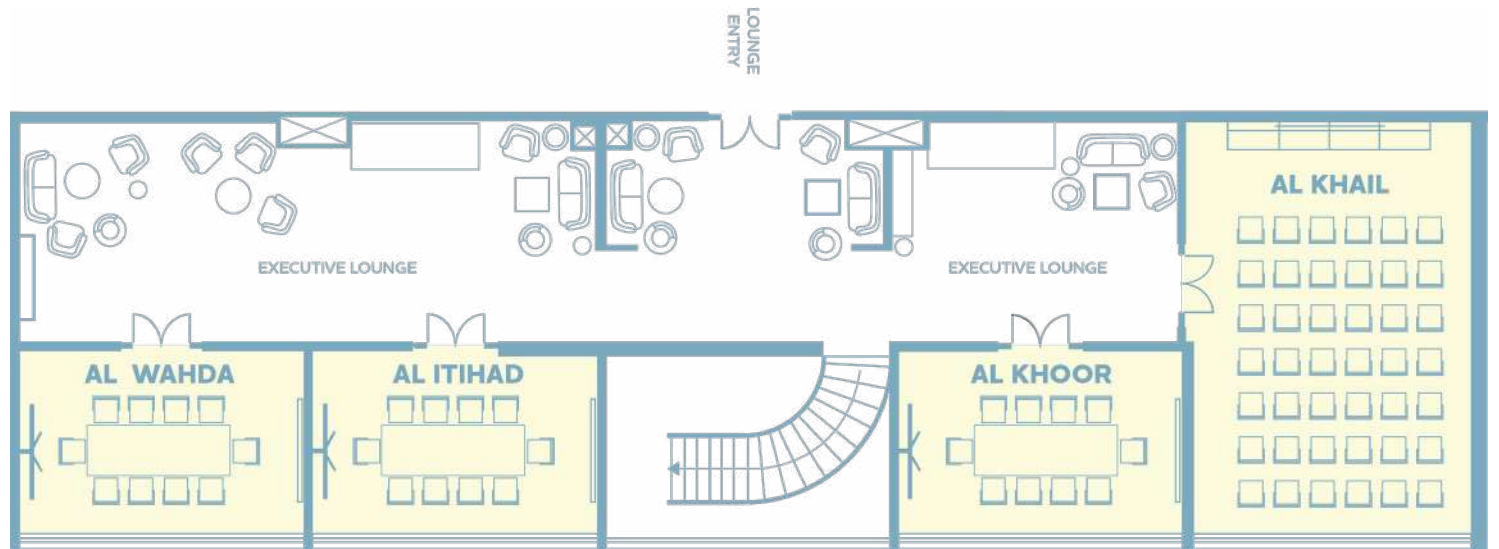
VENUES

40th Floor



VENUES

41st Floor



RECREATION



A Life of Leisure

Enjoy access to a wide range of recreational facilities and services that will keep you and your family entertained throughout your stay.

- » Outdoor swimming pool and Jacuzzi
- » Outdoor kids pool
- » Kids Club
- » Fully-equipped gymnasium including cardiovascular and weights training.
- » Fitness classes
- » Steam & sauna
- » Spa
- » Squash court
- » Indoor football court



CONTACT US

Sheikh Zayed Road, Barsha Heights
Po Box 500300 Dubai, United Arab Emirates

T +971 4 381 8888

F +971 4 381 8899

E-MAIL : sales.dubai@barshaheights.com

800-MERCURE



www.mercuredubaihotel.com